

# Facts about K-12 Spending and Achievement\*

\*Courtesy of local districts, KSDE and U.S. Dept. of Education

Kansas Policy Institute

# Diagnosing the Situation

- If you took your child to the doctor for a checkup and a problem was discovered, would you want to know about it?
- Diagnosis may be troubling but your child won't get better if the doctor withholds the facts and tells you your child is doing fine.
- Look at K-12 achievement facts and make your own diagnosis.

# Proficiency Matters, Not Rank

## Kansas Performance on 2011 National Testing

	KS National Rank (score)	% Proficient (Kansas)	% Proficient (U.S. average)
4 <sup>th</sup> grade Reading	T – 14th	36%	32%
8 <sup>th</sup> grade Reading	#20	35%	32%
4 <sup>th</sup> grade Math	T – 7th	48%	40%
8 <sup>th</sup> grade Math	T – 10th	41%	34%

Source: Nation's Report Card, U.S. Dept. of Education



# Proficiency Matters, Not Rank

## Kansas Performance on 2011 National Testing

	KS National Rank (score)	% Proficient (Kansas)	% Proficient (U.S. average)
4 <sup>th</sup> grade Reading	T – 14th	36%	32%
8 <sup>th</sup> grade Reading	#20	35%	32%
4 <sup>th</sup> grade Math	T – 7th	48%	40%
8 <sup>th</sup> grade Math	T – 10th	41%	34%

Are these acceptable levels of proficiency?

Source: Nation's Report Card, U.S. Dept. of Education



# Comparing Districts and States

- It wouldn't be fair to compare achievement levels of affluent suburban districts with low-income inner-city districts. There are large gaps between students of different income levels and racial backgrounds.
- That's not because some kids can't learn...they can. It's because they haven't been given the same access to an effective education.

# Student Demographics Vary Widely

	White	Hispanic	Black	Other
United States	53%	22%	17%	8%
Kansas	69%	16%	8%	8%
Missouri	76%	4%	18%	2%
Oklahoma	56%	11%	11%	21%
Colorado	61%	29%	6%	5%
Nebraska	74%	14%	8%	4%
Texas	33%	49%	14%	4%

Source: U.S. Dept. of Education, National Center for Education Statistics



# Achievement Gaps (Avoidable but still Real)

## 2011 NAEP Scale Scores, U.S. Average

	White	Hispanic	Black
4 <sup>th</sup> grade Reading	230	205	205
8 <sup>th</sup> grade Reading	272	251	248
4 <sup>th</sup> grade Math	249	229	224
8 <sup>th</sup> grade Math	293	269	262

**Wide variances in achievement among racial groups prevents valid comparison of overall achievement scores of states with significantly different student body mixes. But we can compare each student group.**

Source: U.S. Dept. of Education, National Center for Education Statistics



# KS Just Slightly Above Average

	White Score		Hispanic Score		Black Score	
	U.S. Avg.	KS	U.S. Avg.	KS	U.S. Avg.	KS
4 <sup>th</sup> Grade Reading	230	229	205	209	205	204
8 <sup>th</sup> Grade Reading	272	272	251	254	248	248
4 <sup>th</sup> Grade Math	249	251	229	235	224	227
8 <sup>th</sup> Grade Math	293	295	269	274	262	269

Kansas' total scores on these twelve measures are 1.02% above the total U.S. average scores; the scale on each measurement is 0 to 500.

Source: U.S. Dept. of Education, National Center for Education Statistics



# Is More Money the Answer?

- Most Kansas education officials equate better achievement with higher spending (higher taxes).
- Some researchers agree but *a lot of researchers and many education officials believe that money does not drive achievement.*
- Compare current spending with other states and a history of Kansas spending...you be the judge.

# States with Best Regional Scores Spend Less than Kansas

	2009 Current Spending Per-Pupil	White Students		Hispanic Students		Black Students	
		Scale Score	U.S. Rank	Scale Score	U.S. Rank	Scale Score	U.S. Rank
Kansas	\$9,951	229	T-20	209	T-15	204	T-21
Missouri	\$9,529	226	T-30	209	T-15	199	T-31
Oklahoma	\$7,885	221	T-48	207	T-23	199	T-31
Colorado	<b>\$8,718</b>	<b>236</b>	<b>6</b>	203	T-32	207	17
Nebraska	\$10,045	230	T-17	208	T-20	199	T-31
Texas	<b>\$8,540</b>	233	T-10	<b>210</b>	<b>14</b>	<b>210</b>	<b>T-7</b>

Source: Census Bureau; U.S. Dept. of Education, National Center for Education Statistics (4<sup>th</sup> grade Reading)



# High Rank - Wide Spending Variance

	'09 Current Spending Per-Pupil	National Ranking – <b>White Students</b>			
		4 <sup>th</sup> Grade Reading	8 <sup>th</sup> Grade Reading	4 <sup>th</sup> Grade Math	8 <sup>th</sup> Grade Math
New Jersey	\$16,271	T-4	2	4	T-2
Connecticut	\$14,531	T-4	3	T-7	T-8
Massachusetts	\$14,118	2	T-4	T-2	T-2
Maryland	\$13,449	3	4	2	5
<b>Texas</b>	<b>\$8,540</b>	<b>T-10</b>	<b>T-10</b>	<b>T-7</b>	<b>T-2</b>
<b>Colorado</b>	<b>\$8,718</b>	<b>6</b>	<b>6</b>	<b>6</b>	<b>T-6</b>

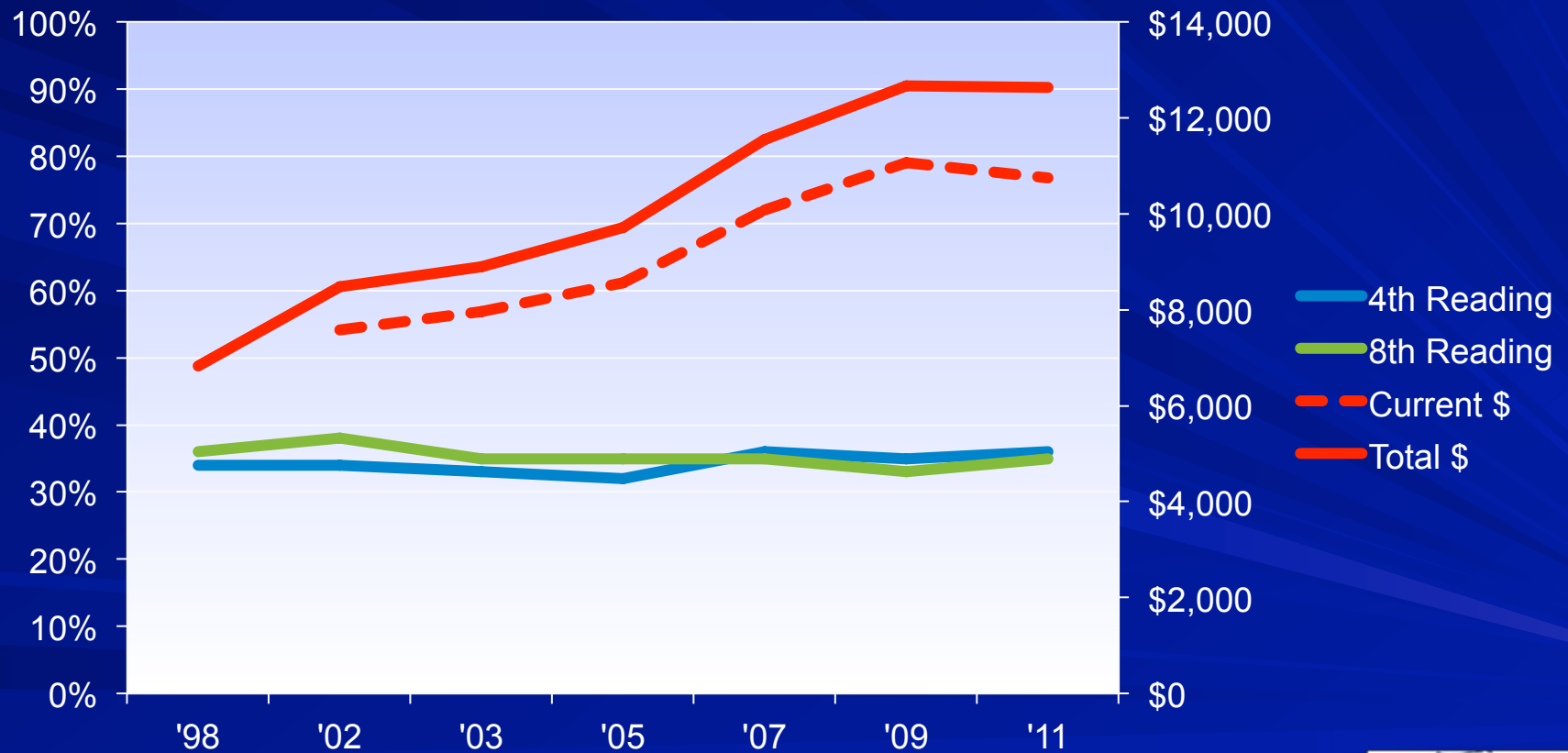
Augenblick & Myers found a similar situation in Kansas and decided to ignore it, so the *Montoy* courts never had access to data of this nature.

Source: Census Bureau; U.S. Dept. of Education, NCES



# More \$ ≠ Higher Achievement

## Kansas Reading Proficiency (NAEP) and Per-Pupil Spending (KSDE)



Source: U.S. Dept. of Education, NCES; Kansas Dept. of Education; Current spending is total less capital and debt (not available for 1998).

# Good News

- Thank goodness money isn't the answer.
- Kansans can't afford \$billions more in taxes.
- Even if the money existed, how many more generations of kids would be deprived of an effective education while waiting for proficiency levels to inch ahead?

# K-12 Funding

Millions of Dollars

	State	Federal	Local	Total
1994	\$1,469	\$137	\$1,012	\$2,618
2005	\$2,362	\$399	\$1,529	\$4,290
2009	\$3,287	\$414	\$1,966	\$5,667
2010	\$2,868	\$727	\$1,995	\$5,590
2011	\$2,962	\$667	\$1,959	\$5,587
<b>2012</b>	<b>\$3,157</b>	<b>\$444</b>	<b>\$2,071</b>	<b>\$5,672</b>

Source: Kansas Dept. of Education



# 2011 Revenue Per-Pupil

	State Aid	Federal Aid	Local Aid	Total Aid
Basehor-Linwood	\$5,709	\$451	\$4,020	\$10,180
Lansing	\$5,647	\$525	\$3,273	\$9,446
Leavenworth	\$7,812	\$2,950	\$7,504	\$18,226
Tonganoxie	\$5,935	\$597	\$3,165	\$9,697
Olathe	\$5,967	\$949	\$4,677	\$11,593
Bonner Springs	\$5,893	\$816	\$3,555	\$10,264
Kansas City	\$8,339	\$2,933	\$4,281	\$15,553
Piper - KC	\$4,203	\$487	\$5,823	\$10,513
Statewide average	\$6,511	\$1,465	\$4,306	\$12,283

Source: Kansas Dept. of Education



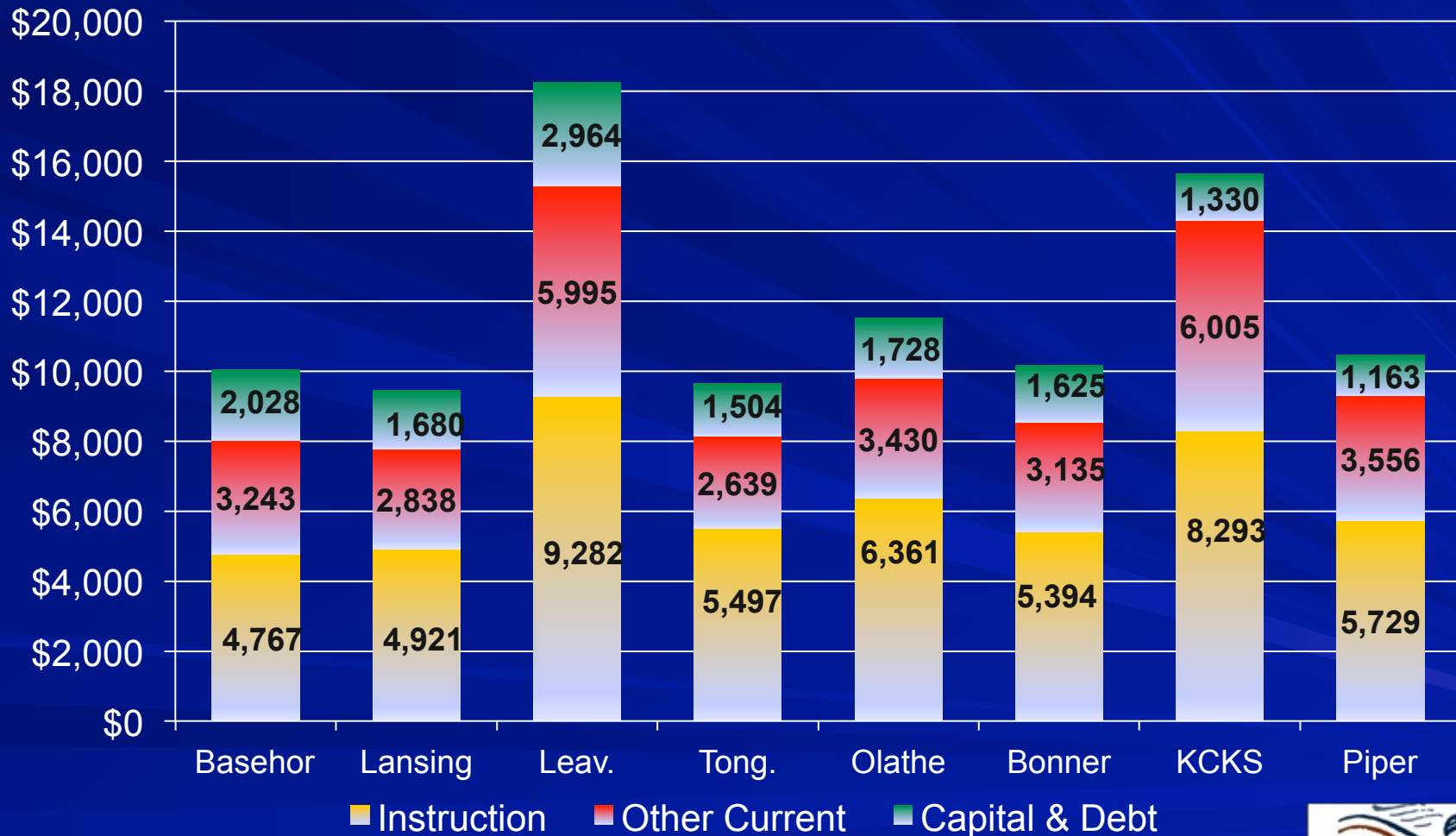
# '05-'11 Change in Per-Pupil Aid

	State Aid	Federal Aid	Local Aid	Total Aid
Basehor-Linwood	19%	267%	40%	30%
Lansing	17%	207%	47%	30%
Leavenworth	48%	97%	94%	72%
Tonganoxie	18%	202%	36%	28%
Olathe	28%	107%	-6%	15%
Bonner Springs	25%	42%	4%	18%
Kansas City	48%	69%	64%	56%
Piper - KC	-16%	313%	70%	23%
<b>Statewide average</b>	<b>22%</b>	<b>62%</b>	<b>25%</b>	<b>27%</b>

Source: Kansas Dept. of Education



# 2011 Spending Per-Pupil



Source: Kansas Dept. of Education, District Budget Profiles



# Operating Carryover Cash

	July 1, 2011	% Change 2005 - 2011	2012 Carryover Ratio
Basehor-Linwood	\$2,248,315	214%	11%
Lansing	\$5,056,813	275%	20%
Leavenworth	\$9,247,420	368%	15%
Tonganoxie	\$1,159,453	116%	7%
Olathe	\$32,238,613	4%	11%
Bonner Springs	\$3,006,429	118%	12%
Kansas City	\$43,378,237	73%	15%
Piper - KC	\$3,852,025	467%	26%
<b>Statewide</b>	<b>\$868,266,452</b>	<b>90%</b>	<b>19%</b>

Source: Kansas Dept. of Education; excludes Capital Outlay and Debt Service.

# Employment & Enrollment

	Students per Teacher	Students Per Employee	05-11 %change Students	05-11 %change Teachers	05-11 %change Employees
Basehor-Linwood	20.2	11.4	5%	7%	-7%
Lansing	19.3	13.1	22%	13%	-25%
Leavenworth	9.4	4.0	-10%	-2%	19%
Tonganoxie	16.2	8.6	17%	21%	23%
Olathe	14.1	7.3	16%	11%	16%
Bonner Springs	14.7	7.2	9%	17%	1%
Kansas City	12.8	6.9	-2%	-1%	-5%
Piper - KC	15.7	9.2	23%	28%	30%
<b>Statewide</b>	<b>13.3</b>	<b>6.7</b>	<b>3.1%</b>	<b>4.6%</b>	<b>6.5%</b>

*Source: Kansas Dept. of Education; enrollment includes At Risk pre-school and teachers include pre-school as calculated by KSDE*



# State Achievement

- District achievement levels only available from state assessment.
- Not comparable to NAEP; different standards and methodology.
- NAEP considered 'gold standard' of testing and much more reliable than state testing.
- Standards changed significantly in 2006.

# Reading – Full Comprehension of Grade-Appropriate Material

	4 <sup>th</sup> Grade	8 <sup>th</sup> Grade	11 <sup>th</sup> Grade
Basehor-Linwood	77%	74%	62%
Lansing	56%	80%	62%
Leavenworth	45%	49%	48%
Tonganoxie	50%	67%	56%
Olathe	73%	75%	68%
Bonner Springs	60%	55%	50%
Kansas City	40%	34%	27%
Piper - KC	82%	71%	70%
<b>Kansas average</b>	<b>63%</b>	<b>64%</b>	<b>55%</b>

**Are these acceptable achievement levels?**

*Source: Kansas Dept. of Education; all students*



# Math: Well-Developed Knowledge; Usually Accurate on Grade-Level Tasks

	4 <sup>th</sup> Grade	8 <sup>th</sup> Grade	11 <sup>th</sup> Grade
Basehor-Linwood	71%	73%	58%
Lansing	44%	71%	52%
Leavenworth	43%	38%	44%
Tonganoxie	52%	43%	51%
Olathe	68%	75%	61%
Bonner Springs	55%	55%	33%
Kansas City	41%	33%	17%
Piper - KC	87%	63%	63%
<b>Kansas average</b>	<b>60%</b>	<b>58%</b>	<b>45%</b>

**Are these acceptable achievement levels?**

*Source: Kansas Dept. of Education; all students*



# State Achievement

- It's not surprising that universities spends \$millions on remedial training or students drop out of college for academic reasons or so many young adults struggle to hold a job.
- Only 55% of Kansas juniors fully comprehend grade-level material and less than half usually perform Math accurately at grade level!
- And that's on the state assessment test; independent test results are lower.

# Each Citizen Must Decide

- **Are you satisfied with achievement levels?**
  - Only about 1/3 Proficient in Reading (NAEP).
  - 55% of Juniors reading grade-appropriate material with full comprehension (KSDE).
- **Will achievement levels soon reach satisfactory levels with the current system?**
- **Are you willing to make substantive operational and philosophical changes?**